



SERVICE BULLETIN

10 THINGS TO CHECK BEFORE YOU GO...

There is nothing worse than rushing to get away and remembering half-way into your trip that you forgot something. Even worse something goes wrong...

Go through these 10 key points and you should enjoy a trouble-free holiday...

1. **CHECK YOUR JOCKEY WHEEL & HITCH ARE SAFE, SECURE AND GREASED.** Do a quick visual check for cracks in the plastic or welds.
2. **CHECK YOUR DRIVING LIGHTS** all work when plugged into the tow vehicle i.e. brake lights, indicators etc
3. **GREASE YOUR SWING ARM POINTS** – There are 2 to 4 grease nipples on the swing arms that can easily be greased
4. **CHECK SWING ARM BOLTS** – Check the 4 swing arm bolts where the trailer connects to the swing arms are tight and there are no visual defects
5. **CHECK WHEEL HUBS** - see service bulletin below
6. **CHECK WHEEL NUTS** – see service bulletin below
7. **ARE ALWAYS YOUR BATTERIES CHARGED?** You should always keep your battery charge level above 11volts
8. **GRAB A SHIFTER** – there is nothing better than grabbing a shifter/socket set or spanner set and doing a quick tension check on all the visual nuts and bolts. Especially if you do a lot of off road/corrugated road driving
9. **CHECK YOUR ELECTRONIC BRAKE CONTROLLER WORKS** - each manufacturer is different - refer to the electronic brake controller manual
10. **ENSURE EVERYTHING IS SECURE** – it would be a bad thing if you get to your destination and the camp chairs on somewhere on the Bruce highway...!!!

Enjoy your travels

For more information call 07 32 555 662



SERVICE BULLETIN

Check wheel nuts

Details: How to check wheel nuts are secure – A Personal check up for Camper Trailer wheel nuts

Frequency: As outlined in the Customer care guide, the details below should be checked prior to every trip. In addition, we recommend a check up every 500-800km and even more frequent when the vehicle is used in off road/corrugated road environments.

CHECKING WHEEL NUTS:

It is important to check your wheel nuts are tight to prevent uneven wearing on wheels, incorrect camber or in the worst case, a wheel coming loose.

To check your nuts are tight, simply check the nuts with a 19mm wheel nut lever or torque wrench (setting 125). **Do not over tighten or use a rattle gun.** A quick way to monitor wheel nut movement is to purchase wheel nut indicators. These are available from SWAG direct.



No wheel nut indicators



Shown with wheel nut indicators

For more information call 07 32 555 662



SERVICE BULLETIN

Check wheel hub bolts

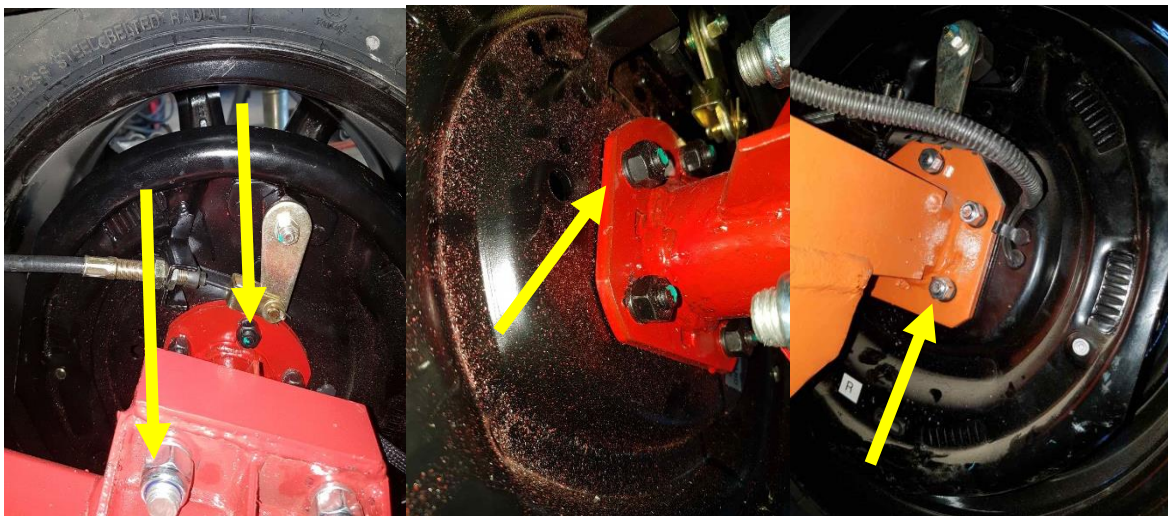
Details: How to check wheel hubs are secure – A Personal check up for Camper Trailer hubs

Frequency: As outlined in the Customer care guide, the details below should be checked prior to every trip. In addition, we recommend a check up every 500-800km and even more frequent when the vehicle is used in off road/corrugated road environments.

CHECKING WHEEL HUB BOLTS:-

It is important to check your wheel hub bolts & nuts are tight to prevent uneven wearing on wheels, incorrect camber or in the worst case, a hub coming loose.

To check your hub bolts and nuts are tight, simply check the nuts on the back of the hub are tight with a hand spanner. To check the size spanner required refer to the nut size. Do not over tighten or use a rattle gun.



For more information call 07 32 555 662