



IMPORTANT SAFETY NOTICE



ISSUED BY: SWAG CAMPER TRAILERS PTY LTD

DATE OF ISSUE: 12TH APRIL 2023

FAULT: GAS APPLIANCE FITTING COULD CRACK LEADING TO AN EXPLOSION IN OR
UNDER THE STOVE AREA.

IMPACTED CAMPERS: MARCH 2022 & JULY 2022

THIS INFORMATION IS FOR ALL CAMPER & CARAVAN USERS - NOT JUST SWAG CAMPER TRAILER
CUSTOMERS



SAFTEY NOTICE



THE PROBLEM:

In March 2022 a review panel made changes to the installation method for fitment of the **external gas cookers** on camper trailers. The new method resulted in extra weight being put onto an elbow fitting at the rear of the cooker. If not supported, the fitting could crack creating a gas leak under the cooktop. For installations post July 2022, the wording in the instruction manual for cooktops was changed and the direct hose connection method could be used again instead of the copper tube & hose connection method.

WHAT SHOULD YOU DO:

CUSTOMERS ARE URGED TO INSPECT THEIR CAMPER TRAILER OR CARAVANS **4 BURNER STOVE** IMMEDIATELY TO DETERMINE IF THE **ELBOW FITTING** HAS BEEN SUPPORTED ON THE REAR OF THE APPLIANCE. IF UNSURE, TAKE PHOTOS AND LODGE THEM VIA THE WARRANTY PROCESS.

IF THE **ELBOW FITTING** IS NOT SUPPORTED (SEE IMAGES) THEN YOU **MUST NOT USE THE APPLIANCE**. **CONTACT YOUR MANUFACTURER IMMEDIATELY.**

THIS INFORMATION IS FOR ALL CAMPER & CARAVAN USERS

NOT JUST SWAG CAMPER TRAILER CUSTOMERS

FOR SWAG CUSTOMERS WITH AN ISSUE, PLEASE SUBMIT A WARRANTY CLAIM ON OUR WEBSITE USING THIS LINK:

<https://www.swagcampertrailers.com.au/support-portal/warranty/>

CALL: 1800 792 422 FOR ASSISTANCE

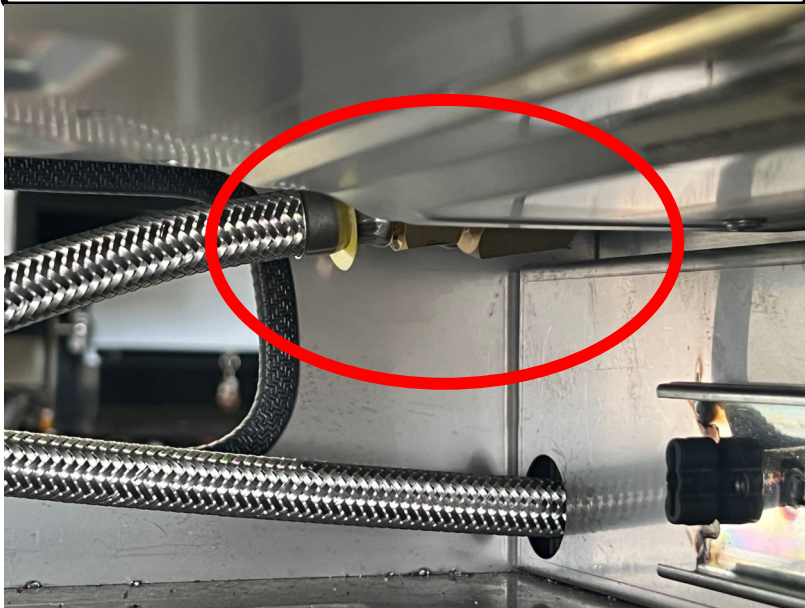
4 BURNER GAS STOVE



DRAWER MAY NEED TO BE REMOVED



FITTING OR CONNECTION TO STOVE



SADDLE SUPPORTING HOSE or PIPE

